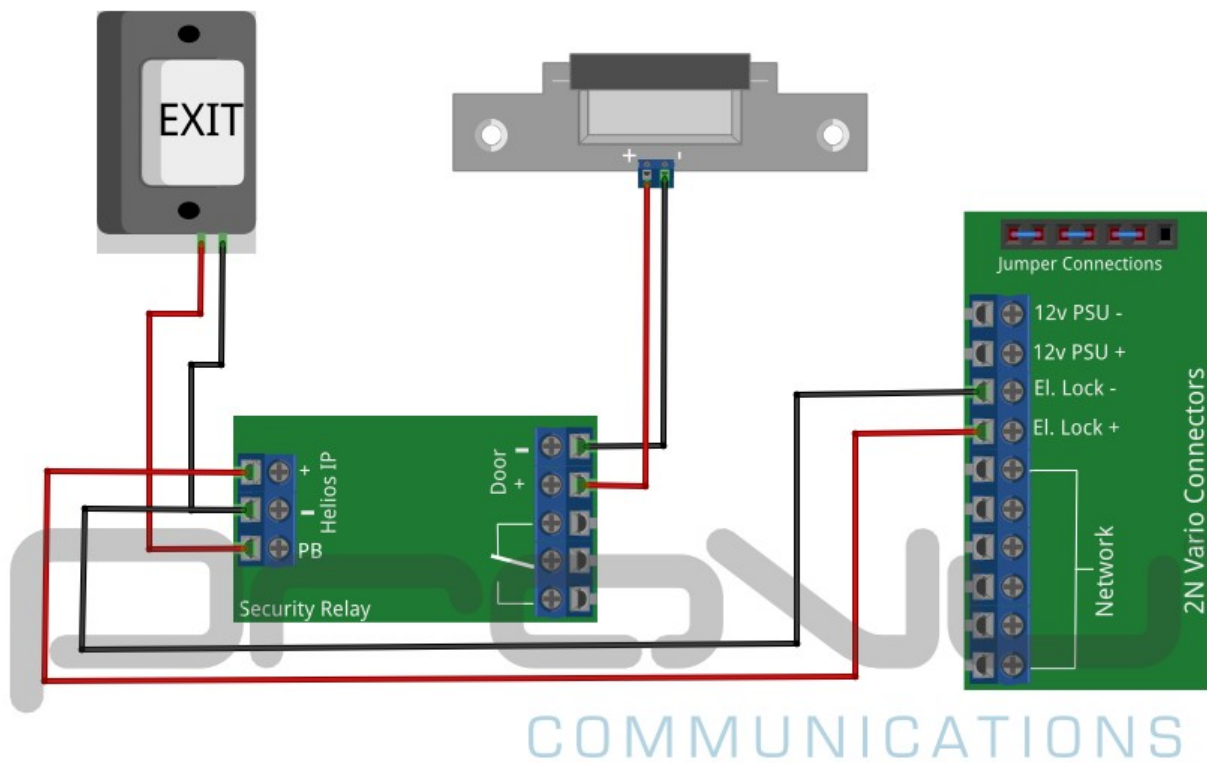


## Wiring Diagram

### 2N Helios IP Vario with Fail Secure Lock, Exit Button and 2N Security Relay

The wiring diagram below shows how to wire a fail secure strike lock into the 2N Helios IP Vario when powered via Power over Ethernet (PoE). It also shows how to connect an exit button and 2N Security Relay.

Please pay special attention to the Jumper Connections at the top of the Vario on the diagram. It is important that these are connected in the correct way otherwise the lock will not work correctly.



Connecting the 2N Security Relay requires you to change the settings in the web interface of the IP Vario in order for it to communicate properly with the relay. Log in to the web interface by web browsing to the IP address of the IP Vario.

Default Login credentials:

Username: admin

Password: 2n

Then go to the Hardware > Switches page and set the following settings:

Controlled Output: Relay 1

Output Type: Security

This can be seen in the diagram below:

If you have wired this up as per the diagram above, and the unit is still not working correctly please email us at [support@provu.co.uk](mailto:support@provu.co.uk) and one of our technical team will provide assistance.