

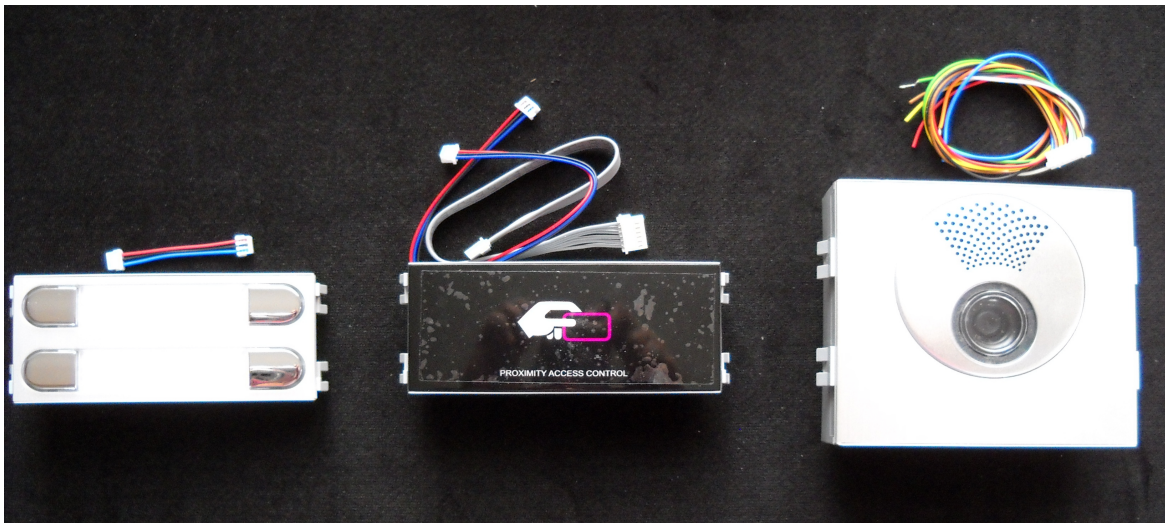
Connection and configuration of Skyline SIP module with 4 additional buttons and RFID reader

This document explains installation and configuration of Skyline SIP module with 4 push buttons and a RFID reader module.

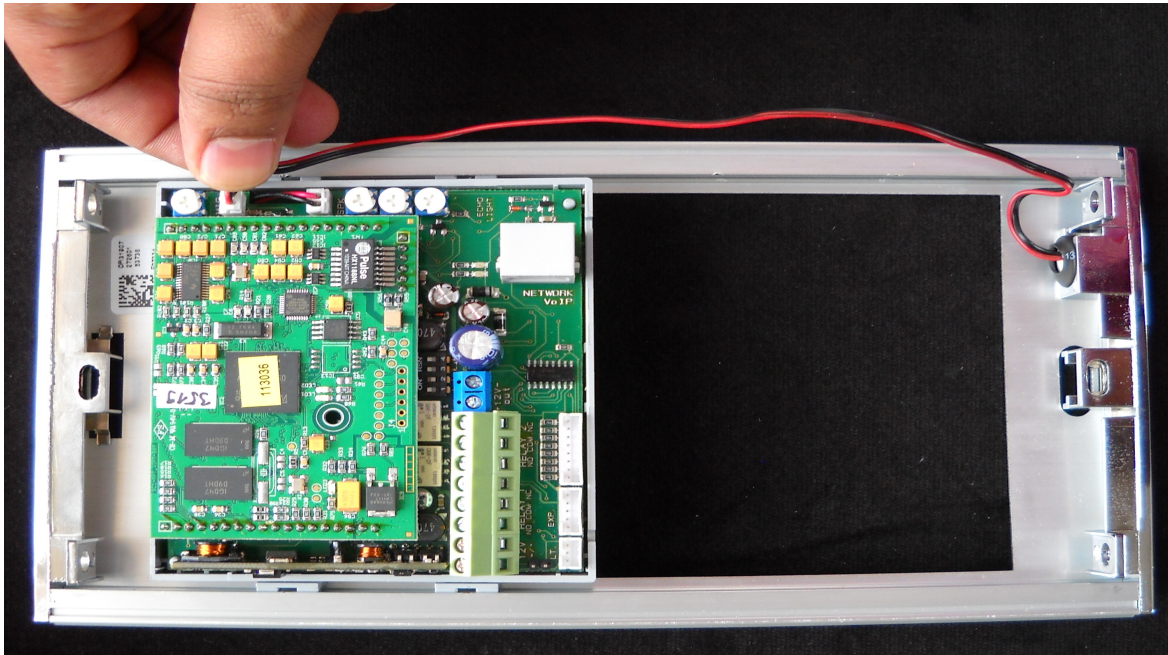
Note : It is recommend to assemble all provided components on the housing frame for easy access and strong hold while connecting cables.

1. First open the packaging and confirm that you have the following cables with each unit.
See picture below for more information.

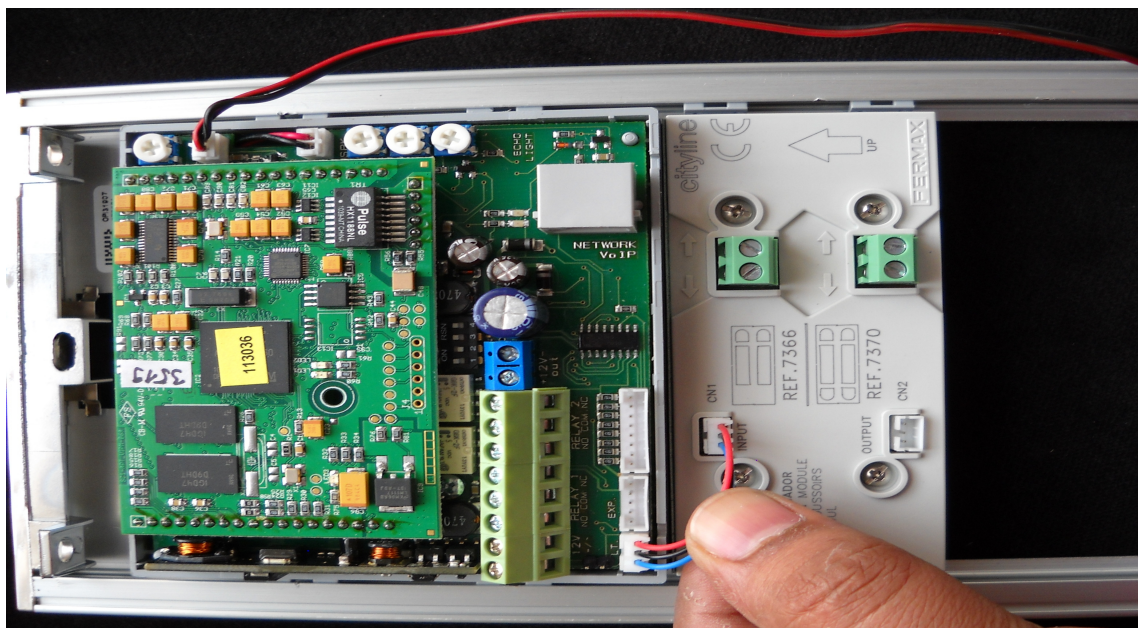
- >> 1 x 8 pin connection wire (CC8) with Audio/Video module
- >> 1 x 2 pin connection wire (CC2) with 4 Push button module
- >> 1 x 3 pin and 1 x 8 pin ribbon cable with RFID reader module



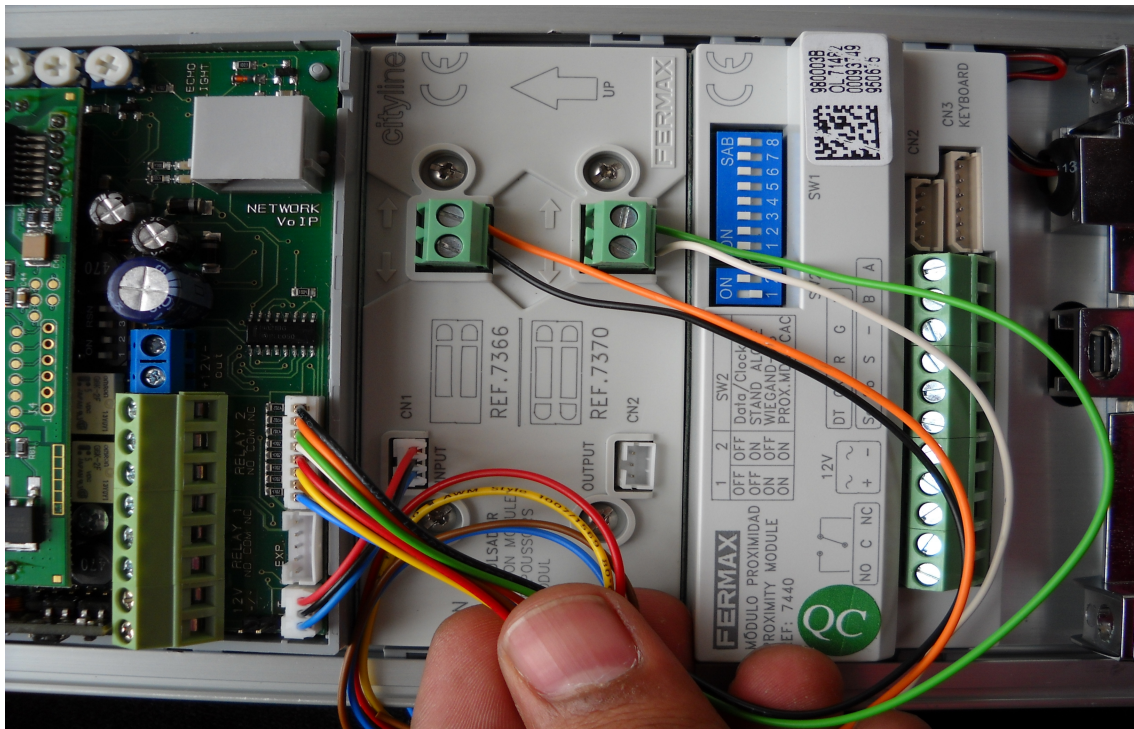
2. Mount the sip module on provided frame and connect microphone connection to it.



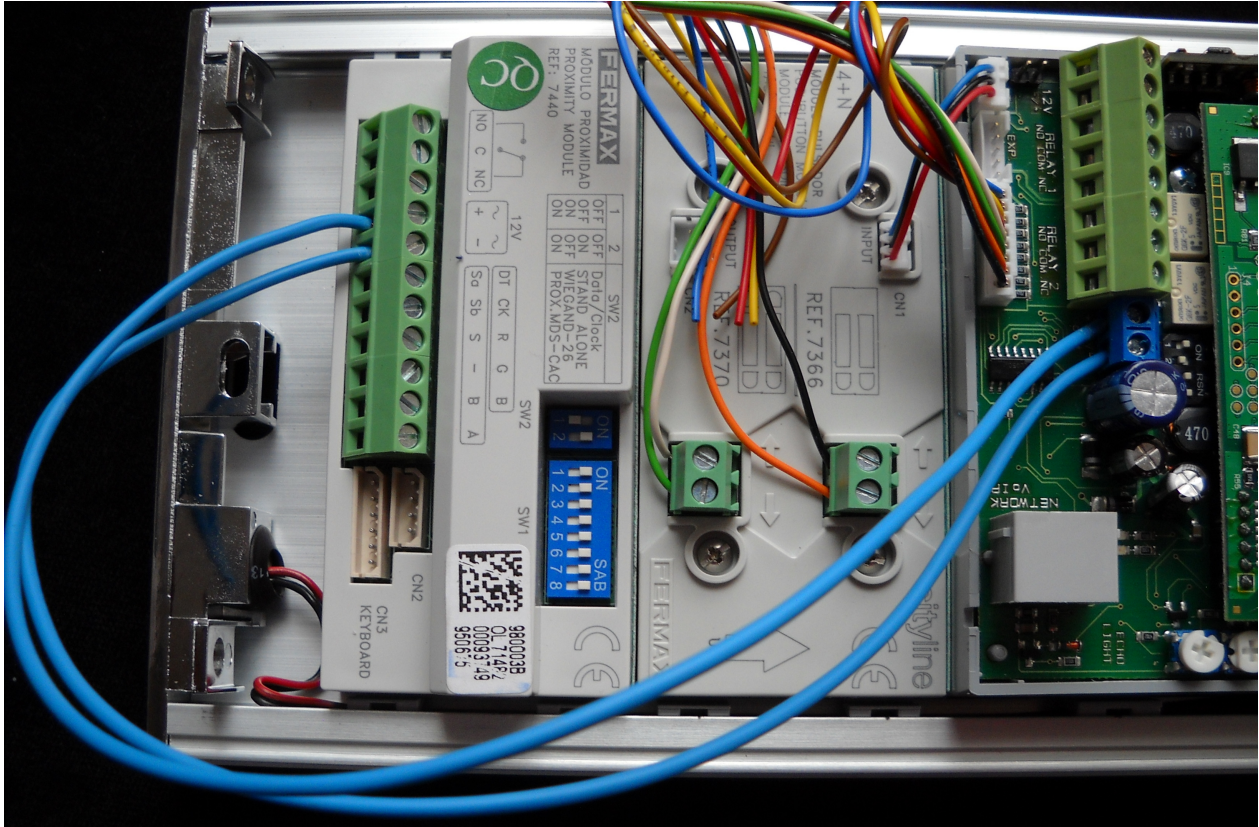
3. Fix the push button module on the frame and connect the 2 pin connector from LT on sip module to INPUT on push button as seen below.



4. Connect the 8 pin connector to the SIP module and free stripped end to the green screw type terminal on the push button. Each cable from the 8 equate to "key/button 3-10" on the web interface. i.e.
- black = 3rd pushbutton
 - orange = 4th pushbutton
 - green = 5th pushbutton
 - white = 6th pushbutton
 - red = 7th pushbutton
 - yellow = 8th pushbutton
 - brown = 9th pushbutton
 - blue = 10th pushbutton



- Now mount the RFID reader on to the frame and connect power cables to it. Load requirement for RFID reader is 12VDC 90mA. The RFID reader can be powered on either by using 12V out pin connectors on the sip module or 12V external power supply. Sip module can provide 12V 350 mA load current which is enough for powering on the RFID reader. For this tutorial, we will use the 12V out from the sip module. Connect the 12V+ from sip module to 12V+ on the RFID and 0V sip module to 0V on RFID reader as shown below.



- Finally connect the door lock in series with Relay 1 on SIP module and Relay on RFID reader (not shown) and start adding card. Details about how to add and delete a card can be found in manual provided with the box.

