

## 1. Package Content

Thank you for purchasing PLANET 24-Port Fast Ethernet + 2-Port Gigabit TP/SFP Combo Managed Switch, FGSW-2620VM / FGSW-2624SF / FGSW-2620PVM / FGSW-2612PVM series. Terms of "**Managed Switch**" means the switches mentioned titled in the cover page of this Quick installation guide.

Upon open the box of the Managed Switch and carefully unpack it. The box should contain the following items:

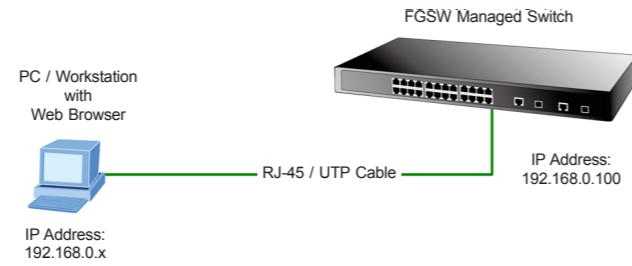
- The Managed Switch x 1
- This Quick Installation Guide x 1
- User's Manual CD x 1
- Power Cord x 1
- Rubber Feet x 4
- Two Rack-mounting Brackets with Attachment Screws x 1
- RS-232 DB9 Male Console Cable (FGSW-2620PVM / FGSW-2612PVM only)

If any item is found missing or damaged, please contact your local reseller for replacement.

- 1 -

## 3. Start Web Management

The Managed Switch provides a built-in browser interface. You can manage it remotely by having a remote host with Web browser, such as Microsoft Internet Explorer, Netscape Navigator or Mozilla Firefox.



The following shows how to startup the **Web Management** of the FGSW Managed Switch, please note the Managed Switch is configured through an Ethernet connection, make sure the manager PC must be set on the same **IP subnet address**.

For example, the default IP address of the Switch is **192.168.0.100** (the factory-default IP address), then the manager PC should be set at 192.168.0.x (where x is a number between 1 and 254, except 100), and the default subnet mask is 255.255.255.0.

- 3 -

## 2. Requirements

The Managed Switch provide remote Web interface for manage; the following equipments are necessary for further management.

- **Workstation** installed with Ethernet NIC (Network Interface Card)
- Workstations of subscribers running Windows 98/ME, NT4.0, 2000/XP, MAC OS9 or later, Linux, UNIX or other platform compatible with TCP/IP protocols.
  - Above Workstation installed with WEB Browser and JAVA runtime environment Plug-in
- **Ethernet Port** connect
  - Network cables-use standard network (UTP) cables with RJ45 connectors.
- **Serial Port** connect (FGSW-2620PVM / FGSW-2612PVM only)
  - Above PC with COM Port (DB-9 / RS-232) or USB-to-RS-232 converter



It is recommended to use Internet Explore 6.0 or above to access FGSW Managed Switch.

- 2 -

### Login the Managed Switch

1. Use Internet Explorer 6.0 or above Web browser, enter IP address **http://192.168.0.100** (the factory-default IP address or that you have just changed in console) to access the Web interface.
2. When the following dialog box appears, please enter the default user name "**admin**" and password "**admin**". The login screen in Figure 3-1 appears.

Default IP Address: **192.168.0.100**

Default User name: **admin**

Default Password: **admin**



The following screen based on FGSW-2620VM, for FGSW-2624SF, FGSW-2620PVM and FGSW-2612PVM the display will be the same to FGSW-2620VM.

- 4 -

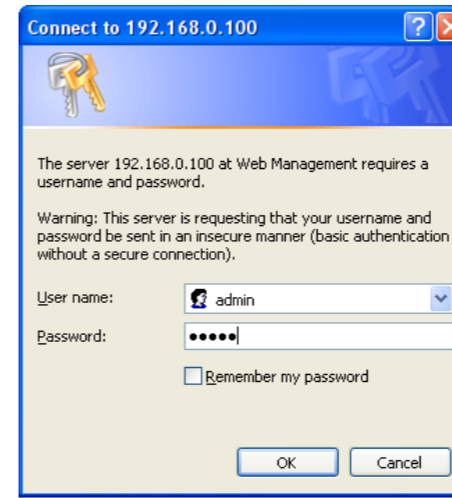


Figure 3-1. Web Login Screen of FGSW-2620VM

- 5 -

3. After entering the user name and password, the Web main screen appears as Figure 3-2.



Figure 3-2. Web Main Screen of FGSW-2620VM

Now, you can use the Web management interface to continue the Switch management, please refer to the user manual for more.

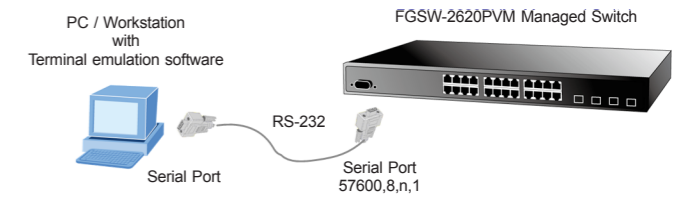


For security reason, please change and memorize the new password after this first setup.

- 6 -

## 4. Terminal Setup (PoE Model Only)

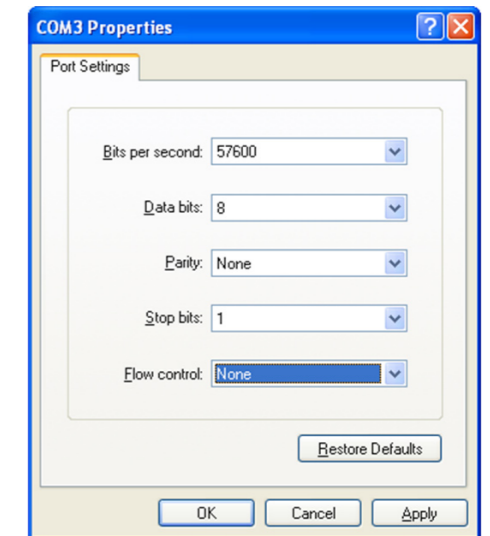
To configure the system, connect a serial cable to a **COM** port on a PC or notebook computer and to serial (console) port of the FGSW-2620PVM / FGSW-2612PVM. The console port of the Managed Switch is DCE already, so that you can connect the console port directly through PC without the need of Null Modem.



A terminal program is required to make the software connection to the FGSW-2620PVM / FGSW-2612PVM. **Windows' Hyper Terminal** program may be a good choice. The Hyper Terminal can be accessed from the **Start** menu.

1. Click **START**, then **Programs, Accessories** and then **Hyper Terminal**.
2. When the following screen appears, make sure that the COM port should be configured as:

- ◆ Baud : 57600
- ◆ Parity : None
- ◆ Data bits : 8
- ◆ Stop bits : 1
- ◆ Flow Control : None



- 8 -

## 5. Logon to the Console (FGSW-2620PVM / FGSW-2612PVM)

Once the terminal has connected to the device, power on the FGSW-2620PVM, the terminal will display that it is running testing procedures.

Then, the following message asks the login user name and password. The factory default password as following and the login screen in Figure 5-1 appears.

Username: **admin**  
Password: **admin**

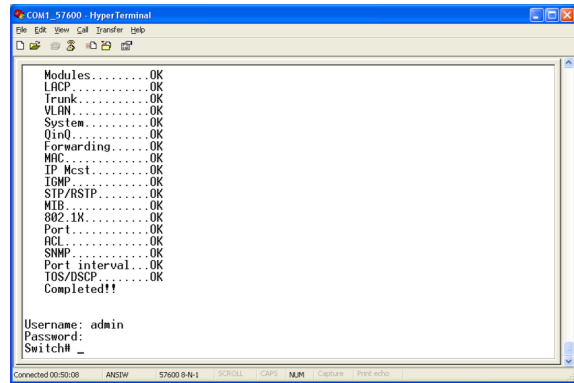
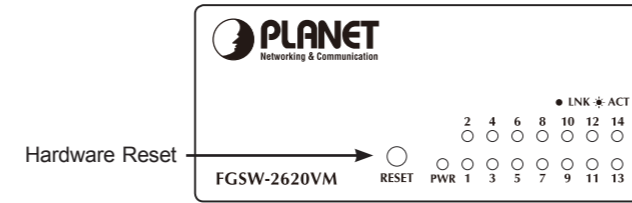


Figure 5-1 FGSW-2620PVM Console Login screen

## 6. While IP Address be changed or forgotten admin password –

To reset the IP address to the default IP Address “192.168.0.100” and the user name / password to factory default mode (default user name and password is **admin**). Press the hardware reset button at the front panel about 5 seconds. After the device is rebooted, you can login the management Web interface within the same subnet of 192.168.0.xx and default user name / password. Be noted, all the previous setup will disappeared after factory reset.



## Layer 2 24+2G Managed Ethernet Switch FGSW-Series Cost-effective SMB Networking Solution



For FGSW-2620VM / FGSW-2620PVM / FGSW-2612PVM / FGSW-2624SF

### Quick Installation Guide

- Note**
1. For security reason, please change and memorize the new password after this first setup.
  2. Only accept command in lowercase letter under console interface.

## 7. Customer Support

Thank you for purchase PLANET products. You can browse our online FAQ resource at the PLANET Web site first to check if it could solve you issue. If you need more support information, please contact PLANET switch support team.

PLANET online FAQ :  
<http://www.planet.com.tw/en/support/faq.php?type=1>

Switch support team mail address :  
[support\\_switch@planet.com.tw](mailto:support_switch@planet.com.tw)

Copyright © PLANET Technology Corp. 2009.

Contents subject to revision without prior notice.

PLANET is a registered trademark of PLANET Technology Corp. All other trademarks belong to their respective owners.